



2026 Q AID Corporate Profile

“ Stable domestic logistics operation ”

Q AID provides the overall logistics operation of its customers based on national logistics base and IT system.

FLOW



Domestic Logistics Operation by WINIA AID

- **Factory Logistics (Procurement · Production)** - Handling Raw materials, Parts, Semi-finished products, and Products
 - ☞ Enables consistent **SCM** (Supply Chain Management) managing by stable support from the production stage.

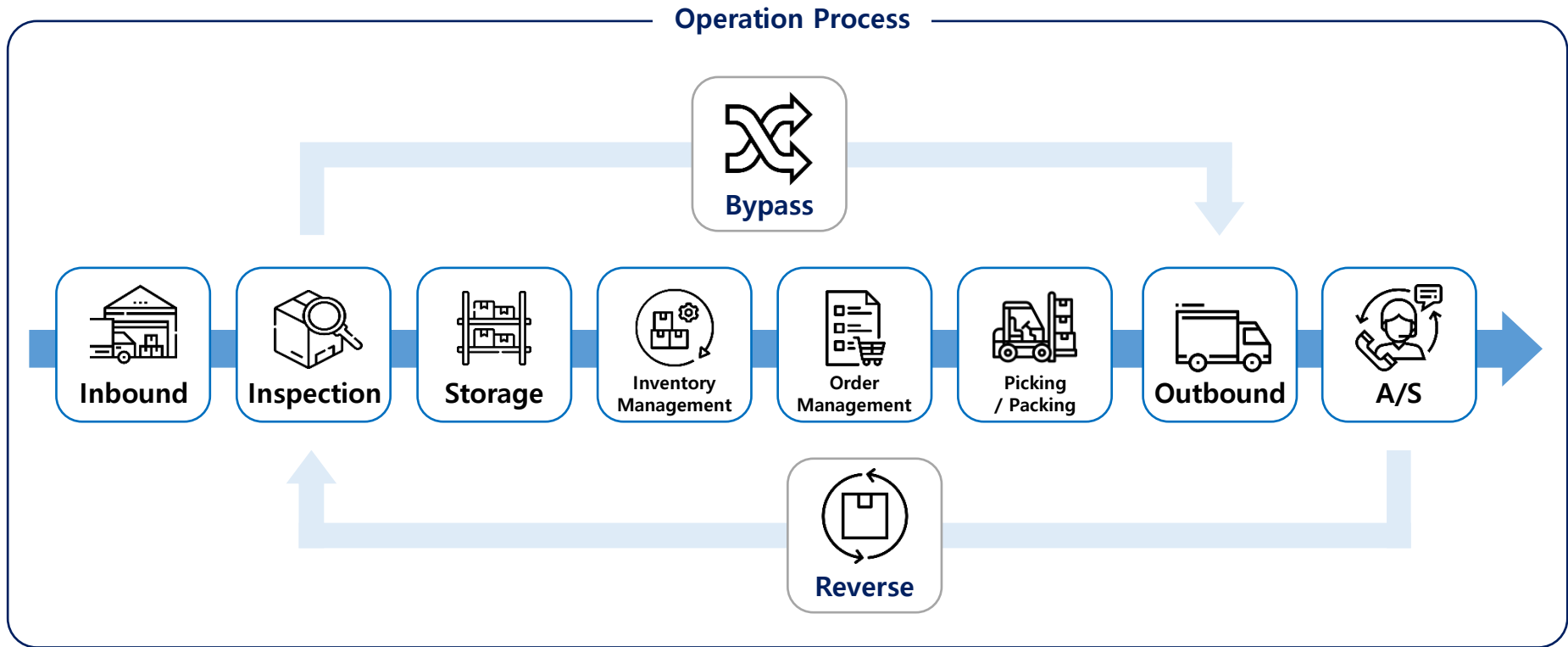
- **Inbound, Inspection, Storage, Outbound** at 1 RDC (Regional Distribution Center) / 11 FDCs (Final Distribution Center)
 - ☞ Warehouse management and Logistics operation based on **WMS** (Warehouse Management System)
 - ☞ Real-time inventory location fluctuation management and Work efficiency improvement through **PDA** linkage
- **24-hours B2B (truck transportation) / B2C (installation and delivery)** freight network based on 1 logistic regions nationwide
 - ☞ Designate the optimal vehicle according to the order volume based on the **OMS** (Order Management System) and
 - ☞ Optimal routing calculation and delivery linkage based on **TMS** (Transport Management System)
 - ☞ Provides data management and customer visibility (WEB) with automatic I/F

➡ Provides nationwide **D+1 installation and delivery** using I/T System specialized in Logistics

- **Reverse Logistics** – in connection with C/S (Call-Center · A/S) Department
 - ☞ Provides **One-Stop service** handling all areas of logistics after sales

“ Systematic Operational Process ”

Q AID provides customer satisfaction through rapid and accurate performance based on systematic process.



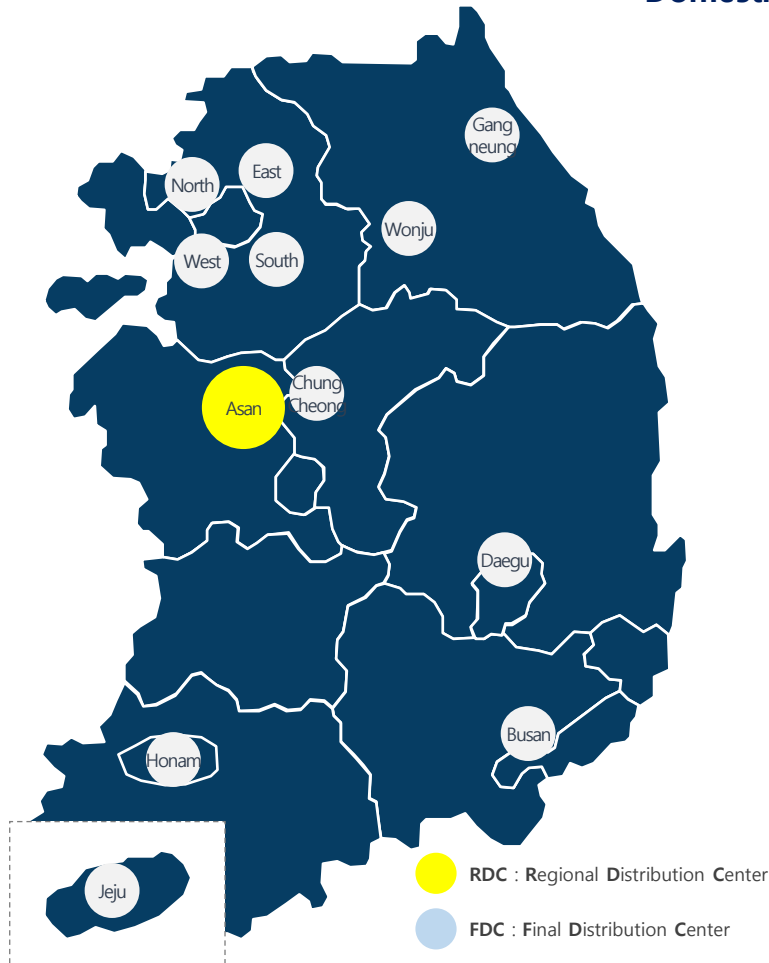
Operation Point

- Improve inventory management accuracy and delivery speed through location management
- Use the delivery channel according to the order type, such as freight Transportation / Installation / Delivery service
- Handling all ISSUES before and after logistics based on organic connection with Sales / C/S Department
- Maximize logistics BPO benefits with regular feedback and improvement proposals

“ Owned nationwide delivery Infra ”

WINIA AID has a cargo network that connects the country within 24 hours, through 12 logistic bases nationwide.

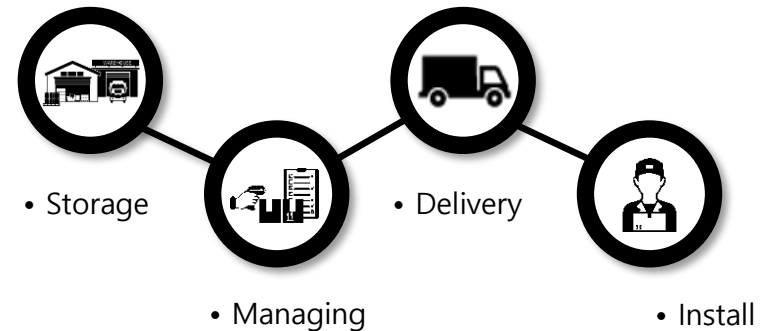
Domestic Logistics Infra



Warehouse

Center	RDC / FDC	Remark
● RDC	1	Nationwide Delivery Hub
● FDC	11	Final Delivery Spoke
TOTAL	12	

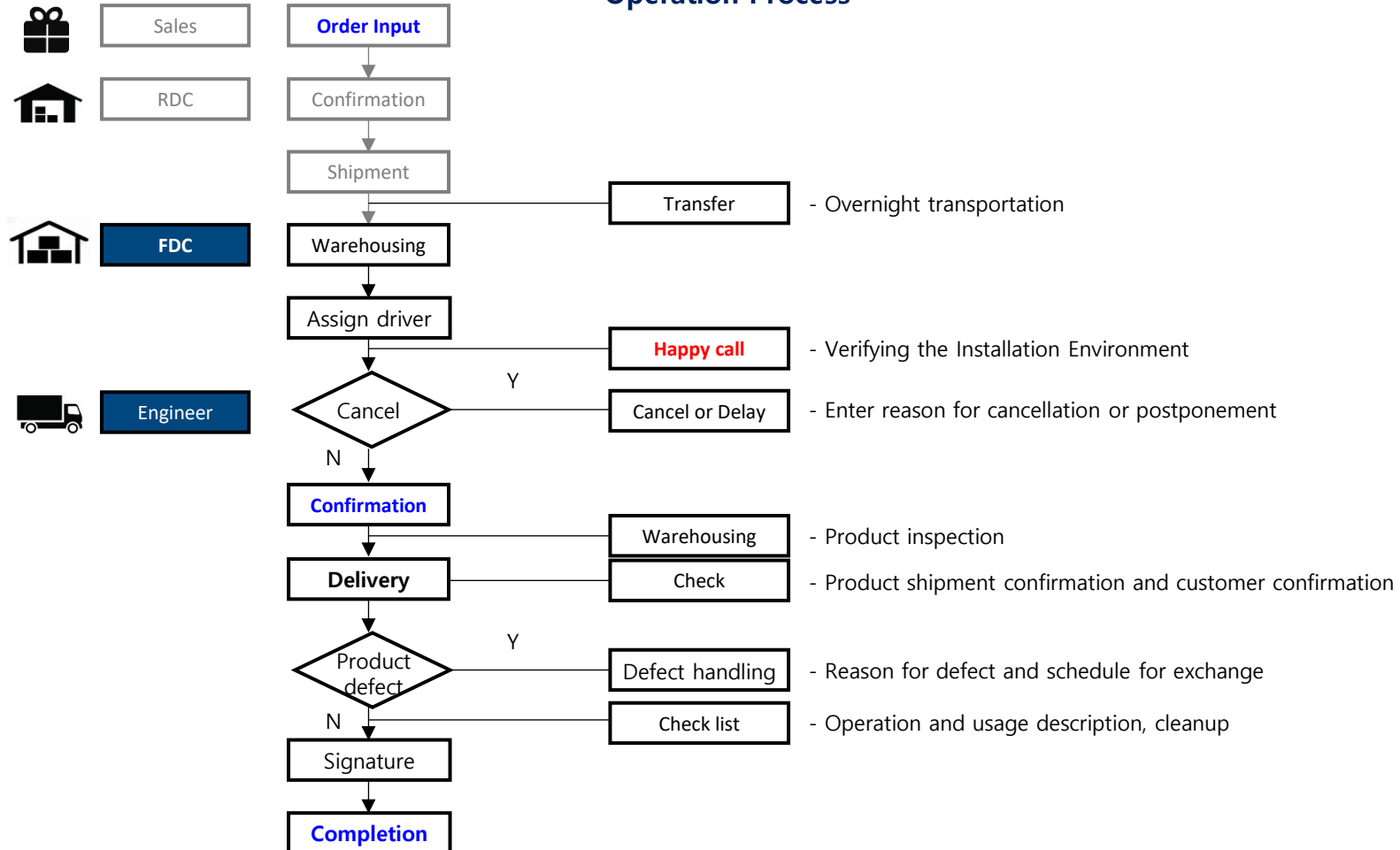
Scope



“Systematic Operational Process ”

After moving the product to a local delivery center (FDC) through a hub distribution center (RDC), we are installing delivery according to business standards.

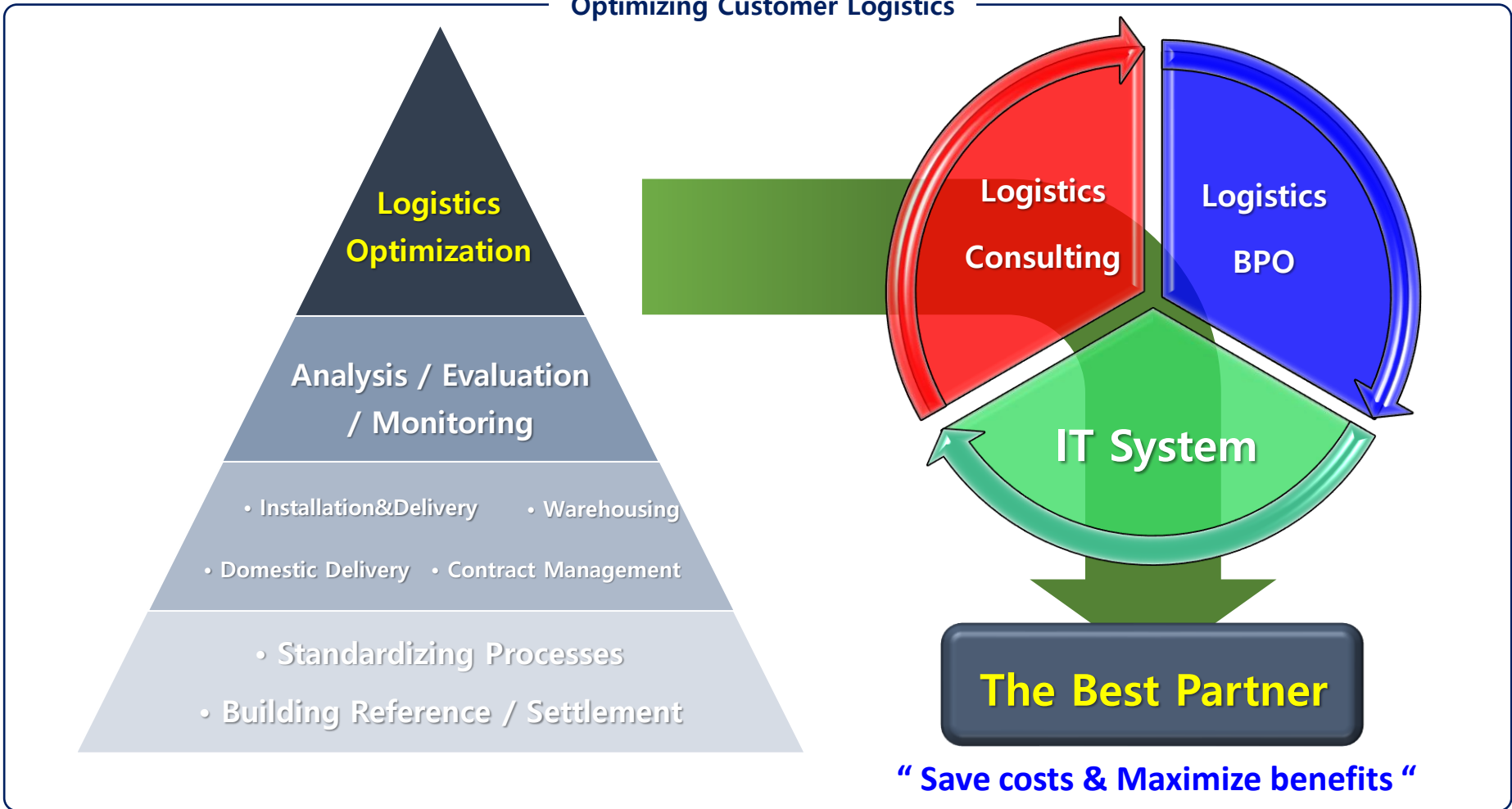
Operation Process



“ Total Logistics Solution ”

WINIA AID is growing with customers as an optimal partner based on integrated solutions and customized consulting.

Optimizing Customer Logistics





- **Company Name : Q AID CO., LTD.**
- **CEO : HeeWoong Kim**
- **Establish : 2015-01-26**
- **Address : 321, Saam-ro, Gwangsan-gu, Gwangju, Republic of Korea**
Office - 1267, Samcheonbyungma-ro, Bongdam-eup,
Hwaseong-si, Gyeonggi-do, Korea
- **Recognition**
 - Presidential Award Commendation at the National Quality Management Conference (2017)
 - Korea's Best Service Quality Company (2017)
 - Ranked No. 1 in the national customer Kimchi refrigerator satisfaction index for 10 consecutive years
 - Acquired KSQI excellent call center certification for 3 consecutive years (2018, 2019, 2020)

※ Contact Point

Logistics Team	Team Leader	Warehouse&Distribution	Installation&Delivery
Contact point	Jaedong Um	Sewoo Lee	Eunjung Kim
E-Mail	ujd@q-aid.co.kr	SeoWoo_Lee@q-aid.co.kr	blackv926@q-aid.co.kr
TEL	+82 10-3540-3156	+82 70-8850-2132	+82 31-599-6244